



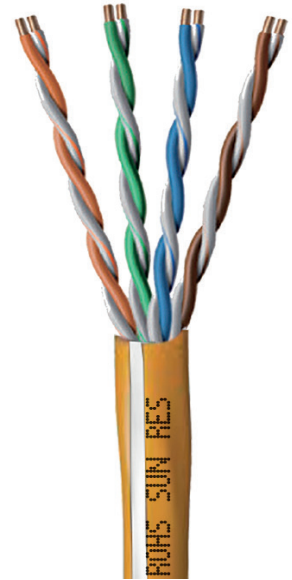
GameChanger Cable

Unshielded Twisted Pair
Riser Rated - CMR

258310333

46224PRYWB (legacy part no)

US Patent No. 10,453,589



1.0 Scope

1.1 This cable consists of 4 pair solid bare copper; color-coded high density polyethylene (HDPE) insulation; overall FR-PVC jacket. RoHS-2 Compliant

2.0 Construction

2.1 Conductor

- 2.1.1 Material: Bare Copper
- 2.1.2 Construction: Solid 22 AWG

2.2 Insulation

- 2.2.1 Material: Ultra Low-Loss Dielectric
- 2.2.2 O.D.: 0.044" nom
- 2.2.3 Color Code
 - Pair 1: White/Blue
Blue
 - Pair 2: White/Orange
Orange
 - Pair 3: White/Green
Green
 - Pair 4: White/Brown
Brown

2.3 Core Assembly:

- 2.3.1 4 twisted pairs cabled together to form the main core.

2.4 Jacket

- 2.4.1 Material: FR-PVC
- 2.4.2 Wall Thickness: 0.050" nom.
- 2.4.3 OD: 6.2 + 0.5mm
- 2.4.4 Color: Yellow with a white stripe
- 2.4.5 Ripcord under jacket

2.4.6 Markings: "PAIGE GAMECHANGER PATENT NO 10,453,589 CMR C(UL) E191596XX ROHS SUN RES" (Ascending/Descending length marking)

2.5 Electrical Properties

- 2.5.1 Conductor Resistance: $\leq 6.35\Omega/100m$
- 2.5.2 Insulation Resistance: $\geq 5000M\Omega Km$ (DC500V Charged 1 Min)
- 2.5.3 Voltage Endurance: DC 1500V/min
- 2.5.4 Mutual Capacitance: $\leq 7.0nF/100m$
- 2.5.5 Core-Core Resistance Unbalance: $\leq 5\%$

2.6 Temperature Rating

- 2.6.1 -20°C to +75°C

2.7 Power over Ethernet Support

- 2.7.1 Class 1 - 8

3.0 Weights and Dimensions

3.1 Put Up

- 3.1.1 Length: 1,000 ft box
- 3.1.2 Weight: 32 lbs
- 3.1.3 Dimensions: 15" x 12" x 15"

We want to hear from you!

200 Sheffield St, Suite 302, Mountainside, NJ 07092

Tel: 888.423.8947 gamechanger@paigeelectric.com



Frequency MHz	Return Loss ≥dB/100m	Attenuation ≤dB/100m	NEXT ≥dB/100m	PSNEXT ≥dB/100m
1	32.7	1.5	82.0	78.5
4	34.4	3.0	71.3	66.8
10	30.5	4.8	63.6	60.3
16	33.5	6.2	56.7	56.2
20	35.0	6.2	56.7	56.2
25	34.1	7.8	59.3	55.3
31.25	31.5	8.8	60.9	56.9
62.50	31.1	8.8	60.9	56.9
100	29.4	16.3	50.2	49.2

Application

GameChanger cabling is designed specifically for transmitting Ethernet and can support all 8 classes of Power over Ethernet.

Maximum transmission distance exceeds Category Rating limits, but varies with equipment and settings used. If you have any questions about the maximum recommended distance for a particular installation, please contact us.

UL Verified

GameChanger Cable is the first and only cable verified by UL to deliver 1Gb/s and PoE over 200m.



Connectors

GameChanger cabling works with most Cat 6 jacks and patch cords, but is only recommended to work with Platinum Tools ezEX44 or ezEX48 RJ45 modular plugs.

Alternate Constructions

GameChanger cabling is also available with:

- 258300336 - Plenum, Blue w/ White Stripe
- 258300310 - Plenum, White
- 258330804 - OSP, Black
- 258340804 - OSP Shielded, Black
- 258802404 - Class I, Division 1 Armored

Frequently Asked Questions

For FAQ and best practices please visit:
www.paigedatacom.com/gamechanger

We want to hear from you!

200 Sheffield St, Suite 302, Mountainside, NJ 07092

Tel: 888.423.8947 gamechanger@paigeelectric.com
www.paigeelectric.com/gamechanger





GameChanger Cable

Unshielded Twisted Pair
Plenum Rated - CMP

258300310

46224PPWH (legacy part no)

US Patent No. 10,453,589



1.0 Scope

1.1 This cable consists of 4 pair solid bare copper; color-coded FEP insulation; overall LSFR-PVC jacket. RoHS-2 Compliant

2.0 Construction

2.1 Conductor

- 2.1.1 Material: Bare Copper
- 2.1.2 Construction: Solid 22 AWG

2.2 Insulation

- 2.2.1 Material: Ultra Low-Loss Dielectric
- 2.2.2 O.D.: 0.044" nom
- 2.2.3 Color Code
 - Pair 1: White/Blue
 - Blue
 - Pair 2: White/Orange
 - Orange
 - Pair 3: White/Green
 - Green
 - Pair 4: White/Brown
 - Brown

2.3 Core Assembly:

2.3.1 4 twisted pairs cabled together to form the main core.

2.4 Jacket

- 2.4.1 Material: LSFR-PVC
- 2.4.2 OD: 0.248"nom
- 2.4.3 Color: White
- 2.4.4 Ripcord under jacket

2.4.5 Markings: "PAIGE GAMECHANGER PATENT NO. 10,453,589 CMP C(UL) EXXXXX ROHS SUN RES" (Ascending/Descending length marking)

2.5 Electrical Properties

- 2.5.1 Conductor Resistance: $\leq 6.35\Omega/100m$
- 2.5.2 Insulation Resistance: $\geq 5000M\Omega Km$ (DC500V Charged 1 Min)
- 2.5.3 Voltage Endurance: DC 1500V/min
- 2.5.4 Mutual Capacitance: $\leq 7.0nF/100m$
- 2.5.5 Core-Core Resistance Unbalance: $\leq 5\%$

2.6 Temperature Rating

2.6.1 $-20^{\circ}C$ to $+75^{\circ}C$

2.7 Power over Ethernet Support

2.7.1 Class 1 - 8

3.0 Weights and Dimensions

3.1 Put Up

- 3.1.1 Length: 1,000 ft box
- 3.1.2 Weight: 32 lbs
- 3.1.3 Dimensions: 15" x 12" x 15"

We want to hear from you!

200 Sheffield St, Suite 302, Mountainside, NJ 07092

Tel: 888.423.8947 gamechanger@paigeelectric.com



Frequency MHz	Return Loss ≥dB/100m	Attenuation ≤dB/100m	NEXT ≥dB/100m	PSNEXT ≥dB/100m
1	32.7	1.5	82.0	78.5
4	34.4	3.0	71.3	66.8
10	30.5	4.8	63.6	60.3
16	33.5	6.2	56.7	56.2
20	35.0	6.2	56.7	56.2
25	34.1	7.8	59.3	55.3
31.25	31.5	8.8	60.9	56.9
62.50	31.1	8.8	60.9	56.9
100	29.4	16.3	50.2	49.2

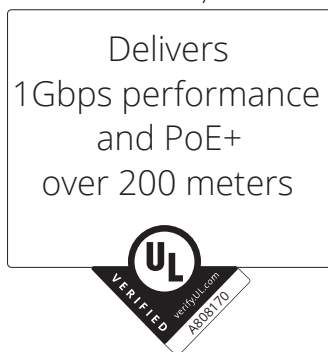
Application

GameChanger cabling is designed specifically for transmitting Ethernet and can support all 8 classes of Power over Ethernet.

Maximum transmission distance exceeds Category Rating limits, but varies with equipment and settings used. If you have any questions about the maximum recommended distance for a particular installation, please contact us.

UL Verified

GameChanger Cable is the first and only cable verified by UL to deliver 1Gb/s and PoE over 200m.



Connectors

GameChanger cabling works with most Cat 6 jacks and patch cords, but is only recommended to work with Platinum Tools ezEX44 or ezEX48 RJ45 modular plugs.

Alternate Constructions

GameChanger cabling is also available with:

- 258300310 - Plenum, White
- 258310333 - Riser, Yellow w/ White Stripe
- 258330804 - OSP, Black
- 258340804 - OSP Shielded, Black
- 258802404 - Class I, Division 1 Armored

Frequently Asked Questions

For FAQ and best practices please visit:
www.paigedatcom.com/gamechanger

We want to hear from you!

200 Sheffield St, Suite 302, Mountainside, NJ 07092

Tel: 888.423.8947 gamechanger@paigeelectric.com
www.paigedatcom.com/gamechanger





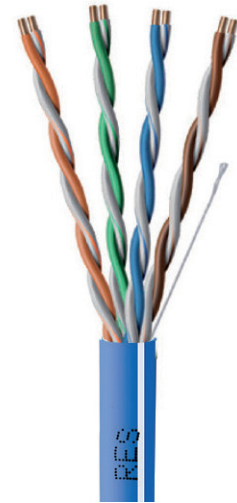
GameChanger Cable

Unshielded Twisted Pair
Plenum Rated - CMP

258300336

46224PPBLW (legacy part no)

US Patent No. 10,453,589



1.0 Scope

1.1 This cable consists of 4 pair solid bare copper; color-coded FEP insulation; overall LSFR-PVC jacket. RoHS-2 Compliant

2.0 Construction

2.1 Conductor

- 2.1.1 Material: Bare Copper
- 2.1.2 Construction: Solid 22 AWG

2.2 Insulation

- 2.2.1 Material: Ultra Low-Loss Dielectric
- 2.2.2 O.D.: 0.044" nom
- 2.2.3 Color Code
 - Pair 1: White/Blue
Blue
 - Pair 2: White/Orange
Orange
 - Pair 3: White/Green
Green
 - Pair 4: White/Brown
Brown

2.3 Core Assembly:

2.3.1 4 twisted pairs cabled together to form the main core.

2.4 Jacket

- 2.4.1 Material: LSFR-PVC
- 2.4.2 OD: 0.248" nom
- 2.4.3 Color: Blue with a white stripe
- 2.4.4 Ripcord under jacket
- 2.4.5 Markings: "PAIGE GAMECHANGER"

PATENT NO. 10,453,589 CMP C(UL) EXXXXX
ROHS SUN RES" (Ascending/Descending
length marking)

2.5 Electrical Properties

- 2.5.1 Conductor Resistance: $\leq 6.35\Omega/100m$
- 2.5.2 Insulation Resistance: $\geq 5000M\Omega Km$
(DC500V Charged 1 Min)
- 2.5.3 Voltage Endurance: DC 1500V/min
- 2.5.4 Mutual Capacitance: $\leq 7.0nF/100m$
- 2.5.5 Core-Core Resistance Unbalance: $\leq 5\%$

2.6 Temperature Rating

- 2.6.1 $-20^{\circ}C$ to $+75^{\circ}C$

2.7 Power over Ethernet Support

- 2.7.1 Class 1 - 8

3.0 Weights and Dimensions

3.1 Put Up

- 3.1.1 Length: 1,000 ft box
- 3.1.2 Weight: 32 lbs
- 3.1.3 Dimensions: 15" x 12" x 15"

We want to hear from you!

200 Sheffield St, Suite 302, Mountainside, NJ 07092

Tel: 888.423.8947 gamechanger@paigeelectric.com



Frequency MHz	Return Loss ≥dB/100m	Attenuation ≤dB/100m	NEXT ≥dB/100m	PSNEXT ≥dB/100m
1	32.7	1.5	82.0	78.5
4	34.4	3.0	71.3	66.8
10	30.5	4.8	63.6	60.3
16	33.5	6.2	56.7	56.2
20	35.0	6.2	56.7	56.2
25	34.1	7.8	59.3	55.3
31.25	31.5	8.8	60.9	56.9
62.50	31.1	8.8	60.9	56.9
100	29.4	16.3	50.2	49.2

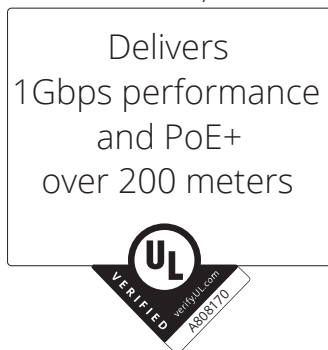
Application

GameChanger cabling is designed specifically for transmitting Ethernet and can support all 8 classes of Power over Ethernet.

Maximum transmission distance exceeds Category Rating limits, but varies with equipment and settings used. If you have any questions about the maximum recommended distance for a particular installation, please contact us.

UL Verified

GameChanger Cable is the first and only cable verified by UL to deliver 1Gb/s and PoE over 200m.



Connectors

GameChanger cabling works with most Cat 6 jacks and patch cords, but is only recommended to work with Platinum Tools ezEX44 or ezEX48 RJ45 modular plugs.

Alternate Constructions

GameChanger cabling is also available with:

- 258300310 - Plenum, White
- 258310333 - Riser, Yellow w/ White Stripe
- 258330804 - OSP, Black
- 258340804 - OSP Shielded, Black
- 258802404 - Class I, Division 1 Armored

Frequently Asked Questions

For FAQ and best practices please visit: www.paigedatcom.com/gamechanger

We want to hear from you!

200 Sheffield St, Suite 302, Mountainside, NJ 07092

Tel: 888.423.8947 gamechanger@paigeelectric.com
www.paigedatcom.com/gamechanger





GameChanger OSP Cable

Unshielded Twisted Pair
Direct Burial

258330804

US Patent No. 10,453,589



1.0 Scope

1.1 This cable consists of 4 pair solid bare copper; color-coded high density polyethylene (HDPE) insulation; water-proof gel; overall Direct Burial jacket. RoHS-2 Compliant

2.0 Construction

2.1 Conductor

- 2.1.1 Material: Bare Copper
- 2.1.2 Construction: Solid 22 AWG

2.2 Insulation

- 2.2.1 Material: Ultra Low-Loss Dielectric
- 2.2.3 O.D.: 0.044" nom
- 2.2.4 Color Code
 - Pair 1: White/Blue
Blue
 - Pair 2: White/Orange
Orange
 - Pair 3: White/Green
Green
 - Pair 4: White/Brown
Brown

2.3 Core Assembly:

- 2.3.1 4 twisted pairs cabled together and fully flooded with a waterproof gel to form the main core.

2.4 Jacket

- 2.4.1 Material: PE
- 2.4.2 Wall Thickness: 0.050" nom.
- 2.4.3 OD: 0.305" nom.
- 2.4.4 Color: Black
- 2.4.5 Ripcord under jacket

- 2.4.6 Markings: "PAIGE® GAMECHANGER™ PATENT NO. 10,453,589 C(UL) DIRECT BURIAL E191596XX ROHS SUN RES" (Ascending/Descending length marking)

2.5 Electrical Properties

- 2.5.1 Conductor Resistance: $\leq 6.35\Omega/100m$
- 2.5.2 Insulation Resistance: $\geq 5000M\Omega Km$ (DC500V Charged 1 Min)
- 2.5.3 Voltage Endurance: DC 1500V/min
- 2.5.4 Mutual Capacitance: $\leq 7.0nF/100m$
- 2.5.5 Core-Core Resistance Unbalance: $\leq 5\%$

2.6 Temperature Rating

- 2.6.1 $-20^{\circ}C$ to $+75^{\circ}C$ (installation)
- 2.6.2 $-40^{\circ}C$ to $+75^{\circ}C$ (operating)

2.7 Power over Ethernet Support

- 2.7.1 Class 1 - 8

3.0 Weights and Dimensions

3.1 Put Up

- 3.1.1 Length: 1,000 ft box
- 3.1.2 Weight: 46 lbs
- 3.1.3 Dimensions: 16" x 12" x 16"

We want to hear from you!

200 Sheffield St, Suite 302, Mountainside, NJ 07092

Tel: 888.423.8947 gamechanger@paigeelectric.com



Frequency MHz	Return Loss ≥dB/100m	Attenuation ≤dB/100m	NEXT ≥dB/100m	PSNEXT ≥dB/100m
1	32.7	1.5	82.0	78.5
4	34.4	3.0	71.3	66.8
10	30.5	4.8	63.6	60.3
16	33.5	6.2	56.7	56.2
20	35.0	6.2	56.7	56.2
25	34.1	7.8	59.3	55.3
31.25	31.5	8.8	60.9	56.9
62.50	31.1	8.8	60.9	56.9
100	29.4	16.3	50.2	49.2

Application

GameChanger cabling is designed specifically for transmitting Ethernet and can support all 8 classes of Power over Ethernet.

Maximum transmission distance exceeds Category Rating limits, but varies with equipment and settings used. If you have any questions about the maximum recommended distance for a particular installation, please contact us.

UL Verified

GameChanger Cable is the first and only cable verified by UL to deliver 1Gb/s and PoE over 200m.

Delivers
1Gbps performance
and PoE+
over 200 meters



Connectors

GameChanger cabling works with most Cat 6 jacks and patch cords, but is only recommended to work with Platinum Tools ezEX44 or ezEX48 RJ45 modular plugs.

Alternate Constructions

GameChanger cabling is also available with:

- 258310333 - Riser, Yellow w/ White Stripe
- 258300336 - Plenum, Blue w/ White Stripe
- 258300310 - Plenum, White
- 258340804 - OSP Shielded, Black
- 258802404 - Class I, Division 1 Armored

Frequently Asked Questions

For FAQ and best practices please visit:
www.paigedatacom.com/gamechanger

We want to hear from you!

200 Sheffield St, Suite 302, Mountainside, NJ 07092

Tel: 888.423.8947 gamechanger@paigeelectric.com
www.paigedatacom.com/gamechanger





GameChanger Shielded OSP Cable

Shielded Twisted Pair

258340804

US Patent No. 10,453,589



1.0 Scope

1.1 This cable consists of 4 pair solid bare copper; color-coded high density polyethylene (HDPE) insulation; water-proof gel; inner and outer FRPE jacket with a aluminum/polyester tape shield with 24 AWG tinned copper drain wire in between the two jackets . RoHS-2 Compliant

2.0 Construction

2.1 Conductor

- 2.1.1 Material: Bare Copper
- 2.1.2 Construction: Solid 22 AWG

2.2 Insulation

- 2.2.1 Material: Ultra Low-Loss Dielectric
- 2.2.3 O.D.: 0.044" nom
- 2.2.4 Color Code
 - Pair 1: White/Blue
Blue
 - Pair 2: White/Orange
Orange
 - Pair 3: White/Green
Green
 - Pair 4: White/Brown
Brown

2.3 Core Assembly:

- 2.3.1 4 twisted pairs cabled together and fully flooded with a waterproof gel to form the main core which is then jacketed with a FRPE inner jacket.

2.4 Jackets

- 2.4.1 Material: FRPE
- 2.4.2 Inner Wall Thickness: 0.025" nom.
- 2.4.3 Outer Wall Thickness: 0.025" nom

- 2.4.3 Total OD: 0.380" nom.
- 2.4.4 Color: Black
- 2.4.5 Ripcord under jacket
- 2.4.6 Markings: "PAIGE® GAMECHANGER CABLE™ SHIELDED OSP PATENT NO. 10,453,589 C(UL) DIRECT BURIAL ROHS SUN RES" Ascending/Descending length marking)

2.5 Electrical Properties

- 2.5.1 Conductor Resistance: $\leq 6.35\Omega/100m$
- 2.5.2 Insulation Resistance: $\geq 5000M\Omega Km$ (DC500V Charged 1 Min)
- 2.5.3 Voltage Endurance: DC 1500V/min
- 2.5.4 Mutual Capacitance: $\leq 7.0nF/100m$
- 2.5.5 Core-Core Resistance Unbalance: $\leq 5\%$

2.6 Temperature Rating

- 2.6.1 -20°C to +75°C (installation)
- 2.6.2 -40°C to +75°C (operating)

2.7 Power over Ethernet Support

- 2.7.1 Class 1 - 8

3.0 Weights and Dimensions

3.1 Put Up

- 3.1.1 Length: 1,000 feet reel
- 3.1.2 Weight: 68 lbs
- 3.1.3 Dimensions: 16" x 12" x 16"

We want to hear from you!

200 Sheffield St, Suite 302, Mountainside, NJ 07092

Tel: 888.423.8947 gamechanger@paigeelectric.com



Frequency MHz	Return Loss ≥dB/100m	Attenuation ≤dB/100m	NEXT ≥dB/100m	PSNEXT ≥dB/100m
1	28	1.5	77	75
4	31	3.0	68	66
10	33	4.8	62	60
16	33	6.2	59	57
20	33	6.2	58	56
25	32	7.8	56	54
31.25	31	8.8	55	53
62.50	29	8.8	50	48
100	28	16.3	47	45

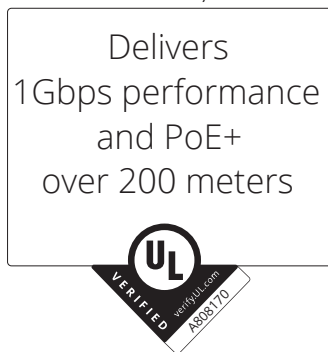
Application

GameChanger cabling is designed specifically for transmitting Ethernet and can support all 8 classes of Power over Ethernet.

Maximum transmission distance exceeds Category Rating limits, but varies with equipment and settings used. If you have any questions about the maximum recommended distance for a particular installation, please contact us.

UL Verified

GameChanger Cable is the first and only cable verified by UL to deliver 1Gb/s and PoE over 200m.



Connectors

GameChanger cabling works with most Cat 6 jacks and patch cords, but is only recommended to work with Platinum Tools ezEX44 or ezEX48 RJ45 modular plugs.

Alternate Constructions

GameChanger cabling is also available with:

- 258310333 - Riser, Yellow w/ White Stripe
- 258300336 - Plenum, Blue w/ White Stripe
- 258300310 - Plenum, White
- 258330804 - OSP (non shielded), Black
- 258802404 - Class I, Division 1 Armored
- Custom Colors

Frequently Asked Questions

For FAQ and best practices please visit: www.paigedatacom.com/gamechanger

We want to hear from you!

200 Sheffield St, Suite 302, Mountainside, NJ 07092

Tel: 888.423.8947 gamechanger@paigeelectric.com
www.paigedatacom.com/gamechanger





GameChanger Hazardous Location Cable

ITC-HL Class I Division 1
Armored

258802404

US Patent No. 10,453,589



1.0 Scope

1.1 This cable consists of 4 pair solid bare copper; color-coded Fluorinated Ethylene Propylene (FEP) insulation; inner FEP and PVC jacket, Continuously Corrugated Welded (CCW) Armor and outer PVC jacket. RoHS-2 Compliant, Sunlight Resistant, Direct Burial. Suitable for Class I Div 1, Class II Div 1 installations

UL2250 Listed Type ITC 300V

UL2225 Listed Type ITC-HL 300V for use in Class 1 Div 1 Hazardous locations.

2.0 Construction

2.1 Conductor

2.1.1 Material: Bare Copper

2.1.2 Construction: Solid 22 AWG

2.2 Insulation

2.2.1 Material: FEP

2.2.3 O.D.: 0.0425" nom

2.2.4 Color Code

Pair 1: White/Blue
Blue

Pair 2: White/Orange
Orange

Pair 3: White/Green
Green

Pair 4: White/Brown
Brown

2.3 Core Assembly:

2.3.1 4 twisted pairs cabled together to form the main core which is then jacketed with FEP and PVC inner jackets.

2.4 Jackets

2.4.1 Material: FEP/PVC/PVC

2.4.2 Natural FEP, 0.218" nom. diameter

2.4.3 Black, PVC, 0.568" nom. diameter

2.4.4 Outer OD: 0.95" nom.

2.4.5 Color: Black

2.4.6 Continuously Corrugated Welded Aluminum Armor between jackets.

2.4.7 Markings: PAIGE GAMECHANGER CABLE™ PATENT # 10,453,589 22 AWG 4 Pair (UL) Type ITC-HL Sun Res ROHS (Ascending/Descending length marking)

2.5 Electrical Properties

2.5.1 Conductor Resistance: $\leq 9.38\Omega/100m$

2.5.2 Max DC Resistance Unbalance: $\leq 5\%$

2.5.3 Nom. Velocity of Propagation 68%

2.6 Physical Properties

2.6.1 Nominal Cable Weight: .331Lbs / ft

2.6.2 Bend Radius: Min: 14"

2.7 Temperature Rating

2.7.1 -20°C to +60°C (installation)

2.7.2 -50°C to +90°C (operating)

3.0 Weights and Dimensions

3.1 Package: Ordered by the foot, shipped on a reel

3.2 Weight: .34 lbs/ ft (without reel)

We want to hear from you!

200 Sheffield St, Suite 302, Mountainside, NJ 07092

Tel: 888.423.8947 gamechanger@paigeelectric.com



Frequency MHz	Return Loss ≥dB/100m	Attenuation ≤dB/100m	NEXT ≥dB/100m	PSNEXT ≥dB/100m
1	28	1.5	77	75
4	31	3.0	68	66
10	33	4.8	62	60
16	33	6.2	59	57
20	33	6.2	58	56
25	32	7.8	56	54
31.25	31	8.8	55	53
62.50	29	8.8	50	48
100	28	16.3	47	45

Application

GameChanger cabling is designed specifically for transmitting Power over Ethernet and IP video and control traffic. Any use other use is not covered under the warranty.

Maximum transmission distance exceeds Category Rating limits, but varies with equipment and settings used. If you have any questions about the maximum recommended distance for a particular installation, please contact us.

HL-Glands

ITC-HL GameChanger Cable works well with Crouse-Hinds Terminator™ TMCX Cable Glands

Connectors

GameChanger cabling works with most Category 6 connectors. For best results, Paige recommends Platinum Tools ezEX connectors.

Alternate Constructions

GameChanger cabling is also available with:

- 258310333 - Riser, Yellow w/ White Stripe
- 258300336 - Plenum, Blue w/ White Stripe
- 258300310 - Plenum, White
- 258330804 - OSP (non shielded), Black
- 258340804 - OSP (Shielded), Black

Frequently Asked Questions

For FAQ and best practices please visit:
www.paigedatacom.com/gamechanger

We want to hear from you!

200 Sheffield St, Mountainside, NJ 07092

Tel: 888.423.8947 gamechanger@paigeelectric.com

www.paigeelectric.com/gamechanger

